



MARKET TRENDS

FOR WEEK ENDING DECEMBER 2, 2016

 **PERFORMANCE**
FOODSERVICE



MARKET TRENDS

DECEMBER 2, 2016

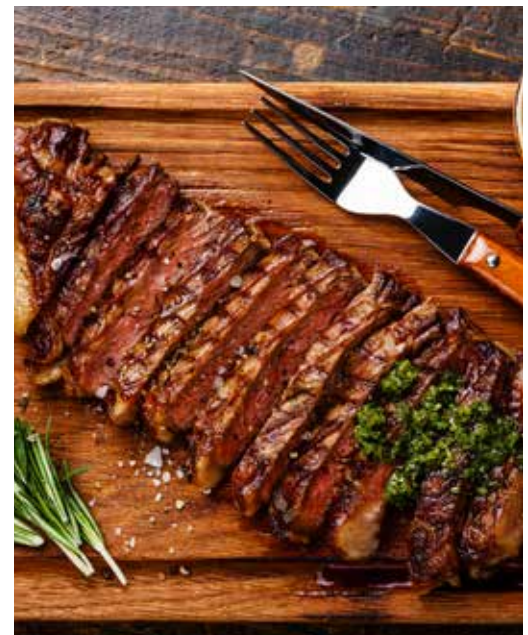
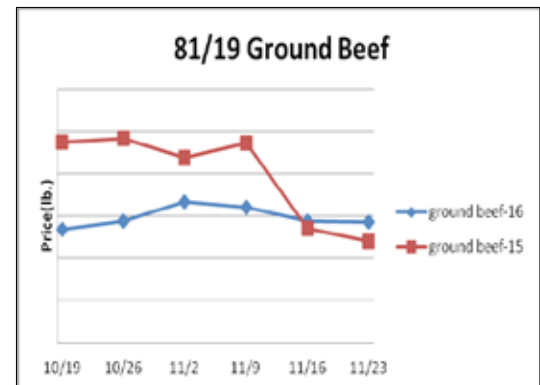
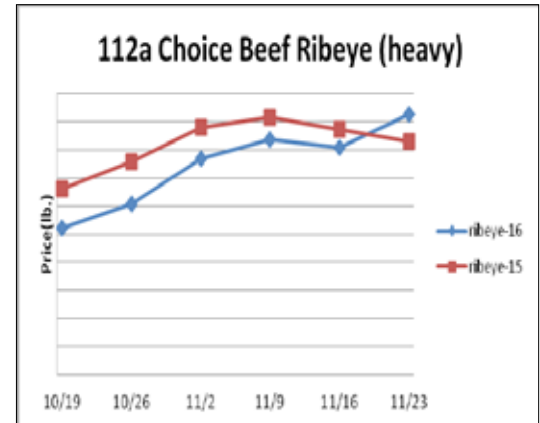
PERFORMANCE
FOODSERVICE



Beef, Veal & Lamb

Beef output last week rose 2.9% and was a whopping 9.1% larger than the same week last year. Beef production was the biggest for any week since the spring of 2011. Solid beef output gains compared to the prior year are forecasted to endure into the winter. The November 1st cattle on feed inventory was 1.3% less than 2015 while cattle placements into feedlots during October were down 5%. Still, the longer-term trend has been a larger cattle on feed inventory and bigger placements. Beef prices are low. The USDA choice boxed beef cutout last week was the least expensive for this time of the year since 2010. History suggests that even lower beef prices are likely in the coming weeks.

Description	Market Trend	Supplies	Price vs. Last Year
Live Cattle (Steer)	Increasing	Short	Lower
Feeder Cattle Index (CME)	Increasing	Short	Lower
Ground Beef 81/19	Decreasing	Good	Higher
Ground Chuck	Decreasing	Good	Lower
109 Export Rib (ch)	Increasing	Good	Lower
109 Export Rib (pr)	Increasing	Good	Higher
112a Ribeye (ch)	Increasing	Good	Higher
112a Ribeye (pr)	Increasing	Good	Higher
114a Chuck , Shlder Cld(ch)	Increasing	Good	Lower
116 Chuck (sel)	Increasing	Good	Lower
116 Chuck (ch)	Decreasing	Good	Lower
116b Chuck Tender (ch)	Decreasing	Good	Higher
120 Brisket (ch)	Increasing	Good	Higher
120a Brisket (ch)	Decreasing	Good	Lower
121c Outside Skirt (ch/sel)	Decreasing	Good	Lower
121d Inside Skirt (ch/sel)	Increasing	Good	Lower
121e Cap & Wedge	Increasing	Good	Lower
167a Knuckle, Trimmed (ch)	Increasing	Good	Lower
168 Inside Round (ch)	Increasing	Good	Lower
169 Top Round (ch)	Increasing	Good	Higher
171b Outside Round (ch)	Increasing	Good	Lower
174 Short Loin (ch 0x1)	Increasing	Good	Lower
174 Short Loin (pr 2x3)	Decreasing	Good	Lower
180 1x1 Strip (ch)	Decreasing	Good	Lower
180 1x1 Strip (pr)	Increasing	Good	Lower
180 0x1 Strip (ch)	Decreasing	Good	Lower
184 Top Butt, boneless (ch)	Increasing	Good	Lower
184 Top Butt, boneless (pr)	Decreasing	Good	Lower
185a Sirloin Flap (ch)	Increasing	Good	Lower
185c Loin, Tri-Tip (ch)	Increasing	Good	Lower
189a Tender (sel, 5 lb & up)	Increasing	Good	Lower
189a Tender (ch, 5 lb & up)	Increasing	Good	Higher
189a Tender (pr, heavy)	Increasing	Good	Lower
193 Flank Steak (ch)	Increasing	Good	Lower
50% Trimmings	Decreasing	Good	Higher
65% Trimmings	Decreasing	Good	Lower
75% Trimmings	Decreasing	Good	Lower
85% Trimmings	Decreasing	Short	Lower
90% Trimmings	Decreasing	Short	Lower
90% Imported Beef (frz)	Steady	Good	Higher
95% Imported Beef (frz)	Decreasing	Good	Higher
Veal Rack (Hotel 7 rib)	Steady	Good	Lower
Veal Top Round (cap off)	Steady	Good	Lower



MARKET TRENDS

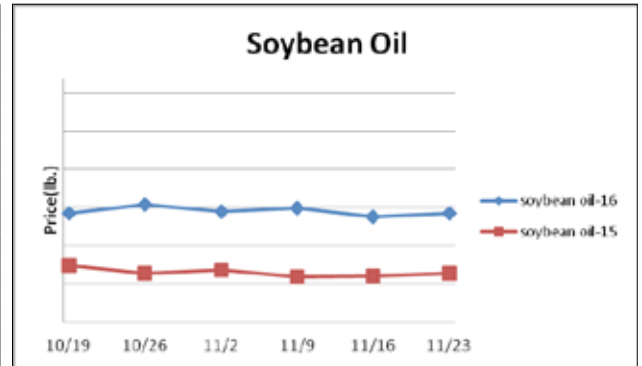
DECEMBER 2, 2016



Grains

The USDA recently boosted their estimates around the sizes of the 2016-17 domestic corn and soybean crops. Both crops are a record large which is expected to cause the best available feed supply in a decade. Fairly engaging corn and soybean prices are anticipated to persevere into the winter.

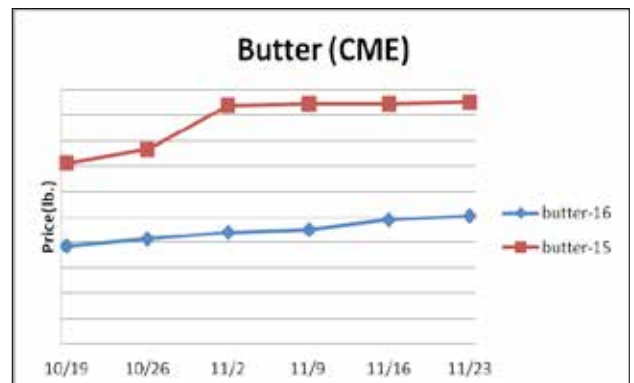
Description	Market Trend	Supplies	Price vs. Last Year
Soybeans, bushel	increasing	Good	Higher
Crude Soybean Oil, lb	Increasing	Good	Higher
Soybean Meal, ton	Increasing	Good	Higher
Corn, bushel	Increasing	Good	Lower
Crude Corn Oil, lb	Decreasing	Good	Higher
High Fructose Corn Syrup	Increasing	Good	Lower
Distillers Grain, Dry	Decreasing	Good	Lower
Crude Palm Oil, lb BMD	Increasing	Good	Higher
HRW Wheat, bushel	Increasing	Good	Lower
DNS Wheat 14%, bushel	Increasing	Good	Lower
Durum Wheat, bushel	Decreasing	Short	Lower
Pinto Beans, lb	Steady	Good	Higher
Black Beans, lb	Steady	Good	Higher
Rice, Long Grain, lb	Decreasing	Good	Lower



Dairy

Strong milk output expansion continues. U.S. milk production during October was up 2.5% from the prior year due to a .2% larger milk cow herd and 2.3% rise in milk per cow yields. Average daily milk output expansion versus October 2015 was the second biggest for any month since the fall of 2014. Solid milk output growth is anticipated to persist this winter. The butter market has been supported as of late due in a large part to solid seasonal demand. However, history suggests lower butter prices may be pending.

Description	Market Trend	Supplies	Price vs. Last Year
Cheese Barrels (CME)	Increasing	Good	Higher
Cheese Blocks (CME)	Increasing	Good	Higher
American Cheese	Decreasing	Good	Higher
Cheddar Cheese (40 lb)	Decreasing	Good	Higher
Mozzarella Cheese	Decreasing	Good	Higher
Provolone Cheese	Steady	Good	Lower
Parmesan Cheese	Decreasing	Good	Higher
Butter (CME)	Increasing	Good	Lower
Nonfat Dry Milk	Increasing	Ample	Higher
Whey, Dry	Increasing	Good	Higher
Class 1 Base	Steady	Good	Lower
Class II Cream, heavy	Steady	Good	Lower
Class III Milk (CME)	Increasing	Good	Higher
Class IV Milk (CME)	Increasing	Good	Lower



MARKET TRENDS

DECEMBER 2, 2016

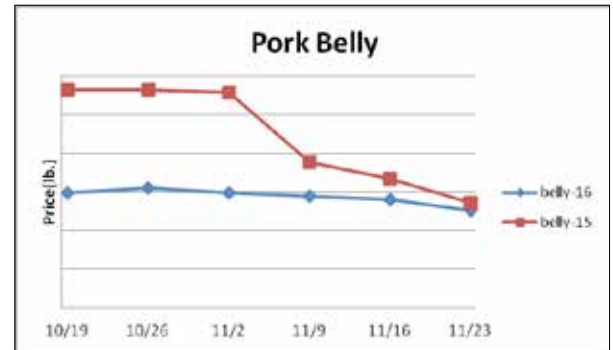
PERFORMANCE
FOODSERVICE



Pork

Pork production last week rose 3.4% and was 4.6% larger than the same week last year. Hog slaughter was the second largest for any week on record. Pork output is expected to track above the previous year levels during the next few months. This should keep a lid on the pork markets despite impressive retail feature activity. Retail pork prices in October were 5.3% less than 2015 and the least expensive for any month since the spring of 2013. Pork belly prices have softened during the last week and further price declines may be impending.

Description	Market Trend	Supplies	Price vs. Last Year
Live Hogs	Decreasing	Ample	Lower
Sow	Decreasing	Ample	Lower
Belly (bacon)	Decreasing	Good	Lower
Sparerib(4.25 lb & down)	Increasing	Good	Lower
Ham (20-23 lb)	Increasing	Good	Higher
Ham (23-27 lb)	Increasing	Good	Higher
Loin (bone in)	Decreasing	Good	Lower
Babyback Rib (1.75 lb & up)	Increasing	Good	Lower
Tenderloin (1.25 lb)	Increasing	Good	Higher
Boston Butt, untrmd (4-8 lb)	Increasing	Good	Higher
Picnic, untrmd	Increasing	Good	Higher
SS Picnic, smoker trm box	Increasing	Good	Higher
42% Trimmings	Decreasing	Good	Higher
72% Trimmings	Decreasing	Good	Lower



MARKET TRENDS

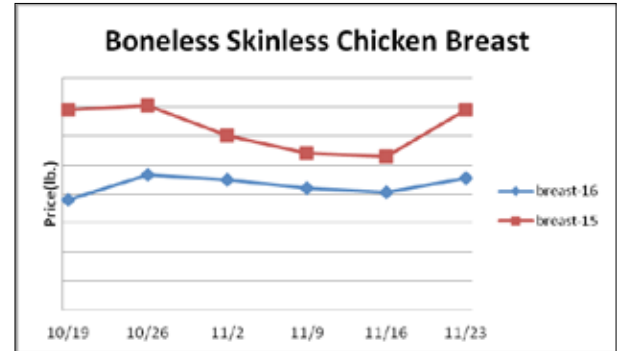
DECEMBER 2, 2016



Poultry

Chicken output for the week ending November 12th rose 3.9% from the prior week and was 5.2% larger than the same week a year ago. The six-week moving average for chicken production is tracking near 2% above 2015. Solid year over year chicken output expansion may persist in the near-term. The six-week moving average for chick placements was at 3.2% above the previous year, marking the biggest increase since the summer of 2015. Chicken wing prices usually firm between now and the Super Bowl due to escalating demand. Yet, the ARA Weekly Chicken Wing Index is carrying its second most expensive premium to the ARA Boneless Skinless Chicken Breast Index. This suggests the upside price risk in wings may be limited.

Description	Market Trend	Supplies	Price vs. Last Year
Whole Birds (2.5-3 GA)	Increasing	Good	Lower
Wings (whole)	Decreasing	Good	Higher
Wings (jumbo cut)	Increasing	Good	Higher
Wing Index (ARA)	Increasing	Good	Higher
Breast, Bone In	Increasing	Good	Lower
Breast, Boneless Skinless	Increasing	Good	Lower
Breast Boneless Index (ARA)	Decreasing	Good	Lower
Tenderloin Index (ARA)	Decreasing	Good	Higher
Legs (whole)	Decreasing	Good	Higher
Leg Quarters	Decreasing	Good	Lower
Leg Quarter Index (ARA)	Decreasing	Good	Higher
Thighs, Bone In	Decreasing	Good	Higher
Thighs, Boneless	Decreasing	Good	Higher
Description	Market Trend	Supplies	Price vs. Last Year
Whole Turkey (8-16 lb)	Decreasing	Good	Lower
Turkey Br, Bnls/Sknls	Decreasing	Good	Lower



Eggs

Description	Market Trend	Supplies	Price vs. Last Year
Large Eggs (dozen)	Decreasing	Short	Lower
Medium Eggs (dozen)	Decreasing	Short	Lower
Liquid Whole Eggs	Increasing	Short	Lower
Liquid Egg Whites	Increasing	Short	Lower
Liquid Egg Yolks	Increasing	Short	Lower
Egg Breaker Stock Central	Decreasing	Short	n/c



MARKET TRENDS

DECEMBER 2, 2016

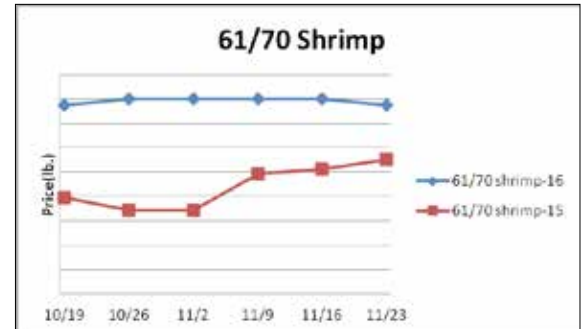
PERFORMANCE
FOODSERVICE



Seafood

The decline in the Newfoundland snow crab fishing season has caused U.S. snow crab imports to stumble. During September, the U.S. imported 23.5% less snow crab than the previous year. Lackluster imports and a decline in Alaskan output should be supportive of prices this winter.

Description	Market Trend	Supplies	Price vs. Last Year
Shrimp (16/20 frz)	Decreasing	Good	Higher
Shrimp (61/70 frz)	Decreasing	Good	Higher
Shrimp Tiger (26/30 frz)	Steady	Good	Higher
Snow Crab Legs (5-8 oz frz)	Steady	Good	Higher
Snow Crab Legs (8oz & up frz)	Steady	Good	Higher
Cod Tails (3-7 oz frz)	Steady	Good	Lower
Cod Loins (3-12 oz frz)	Steady	Good	Lower
Salmon Portions (4-8 oz frz)	Steady	Good	Higher
Pollock Alaska, Deep Skin	Steady	Good	Lower



MARKET TRENDS

DECEMBER 2, 2016

PERFORMANCE
FOODSERVICE



Paper and Plastic Products

Description	Market Trend	Supplies	Price vs. Last Year
WOOD PULP (PAPER)			
NBSK- Paper napkin	Steady	Good	Lower
42 lb. Linerboard-corrugated box	Steady	Good	Lower
PLASTIC RESINS (PLASTIC, FOAM)			
PS-CHH-utensils, cups, to-go cont.	Steady	Good	Lower
PP-HIGP-heavy grade utensils	Steady	Good	Lower
PE-LLD-can liners, film, bags	Steady	Good	Lower

Retail Price Change from Prior Month

Description	Sep '16	Aug '16	Jul '16
Beef and Veal	Decreasing	Increasing	Decreasing
Dairy	Increasing	Increasing	Decreasing
Pork	Decreasing	Increasing	Increasing
Chicken	Increasing	Decreasing	Decreasing
Fresh Fish and Seafood	Increasing	Decreasing	Increasing
Fresh Fruits and Vegetables	Increasing	Increasing	Decreasing

Various Markets

Emerging market currencies have fallen rather sharply as of late due in a large part to the surprise election result in the U.S. This could keep a lid on coffee, sugar and orange juice prices in the near term.

Description	Market Trend	Supplies	Price vs. Last Year
Whole Peeled, Stand (6/10)	Steady	Good	Lower
Tomato Paste-Industrial (lb)	Steady	Good	Lower
Coffee lb ICE	Decreasing	Good	Higher
Sugar lb ICE	Decreasing	Ample	Higher
Cocoa mt ICE	Increasing	Short	Lower
Orange Juice lb ICE	Increasing	Good	Higher
Honey (clover) lb	Decreasing	Good	Lower



MARKET TRENDS



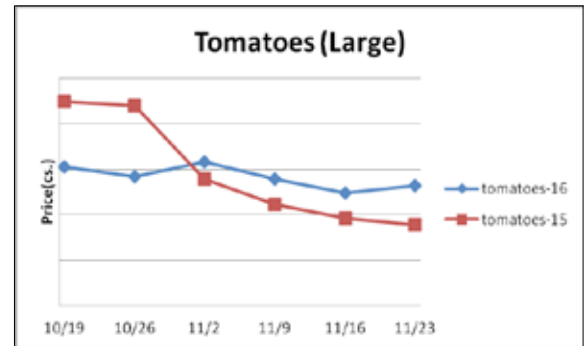
DECEMBER 2, 2016

PERFORMANCE
FOODSERVICE

Produce

We are seeing more improvement in the strawberry market; please see below for more information. Garlic and green beans remain in tight supply. Lettuces, salad mixes, broccoli, and cauliflower remain in good supply and are steady. Avocado supplies have improved due to better imports from Mexico. However, shipments from the country remain well below the prior year levels which is a trend that could persist next month. Thus, the avocado markets may track above 2015 levels during the next several weeks. Still, the upside price risk in avocados from here is thought to only be modest. Lettuce prices remain relatively attractive for buyers as the chief harvest area transitions to the Yuma/Imperial Valley. Adequate lettuce shipments could persist in the near term.

Description	Market Trend	Supplies	Price vs. Last Year
Limes (150 ct)	Decreasing	Good	Lower
Lemons (95 ct)	Decreasing	Good	Lower
Lemons (200 ct)	Steady	Short	Lower
Honeydew (6 ct)	Decreasing	Good	Lower
Cantaloupe (15 ct)	Steady	Good	Higher
Blueberries (12 ct)	Decreasing	Good	Lower
Strawberries (12 pnt)	Decreasing	Good	Lower
Avocados (Hass 48 ct)	Decreasing	Good	Lower
Bananas (40 lb) Term	Decreasing	Good	Lower
Pineapple (7 ct) Term	Increasing	Good	Lower
Idaho Potato (60 ct 50 lb)	Steady	Short	Lower
Idaho Potato (70 ct 50 lb)	Steady	Short	Lower
Idaho Potato (70 ct) Term	Increasing	Short	Lower
Idaho Potato (90 ct 50 lb)	Steady	Short	Lower
Idaho Potato #2 (6 oz 100 lb)	Steady	Short	Lower
Processing Potato (cwt)	Steady	Short	Lower
Yellow Onions (50 lb)	Decreasing	Good	Higher
Yellow Onions (50 lb) Term	Decreasing	Good	Lower
Red Onions (25 lb) Term	Increasing	Good	Lower
White Onions (50 lb) Term	Decreasing	Good	Lower
Tomatoes (lg case)	Increasing	Good	Higher
Tomatoes (5x6 lb) Term	Increasing	Good	Higher
Tomatoes (4x5 vine ripe)	Increasing	Good	Higher
Roma Tomatoes (lg case)	Decreasing	Good	Lower
Roma Tomatoes (xlg case)	Decreasing	Good	Lower
Green Peppers (lg case)	Decreasing	Good	Lower
Red Peppers (lg 15 lb case)	Decreasing	Good	Higher
Iceberg Lettuce (24 ct)	Increasing	Good	Lower
Iceberg Lettuce (24 ct) Term	Decreasing	Good	Lower
Leaf Lettuce (24 ct)	Decreasing	Good	Lower
Romaine Lettuce (24 ct)	Increasing	Good	Lower
Mesculin Mix (3 lb) Term	Steady	Good	Lower
Broccoli (14 ct)	Decreasing	Good	Lower
Squash (1/2 bushel)	Increasing	Good	Lower
Zucchini (1/2 bushel)	Increasing	Good	Lower
Green Beans (bushel)	Decreasing	Good	Lower
Spinach (flat 24)	Decreasing	Good	Lower
Mushrooms (10 lb lg) Term	Steady	Good	Higher
Cucumbers (bushel)	Increasing	Good	Lower
Pickles (200-300 ct) Term	Increasing	Good	Higher
Asparagus (sm)	Decreasing	Good	Lower
Freight (truck CA-Cty Av)	Steady	Good	Lower



MARKET TRENDS

DECEMBER 2, 2016

PERFORMANCE
FOODSERVICE



Produce

Apples & Pears

Prices are unchanged. Large fruit (80- through 100-count sizes) is most prevalent. Braeburn, Honeycrisp, and Pink Lady varieties are also on the market. Quality is excellent: flavor varies from sweet to tangy. Sugar levels are high, ranging from 14 to 18 Brix (sugar to acid ratio). The Washington Bartlett and D'Anjou markets are level; new crop supplies are dominated by 110- to 135-count sizes. Sugar levels range from 12 to 14 Brix.

Artichokes

We expect good supplies because supplies industry-wide have increased. Better volume is expected in the upcoming weeks. Prices are steady to lower on some sizes.

Arugula

Supplies and quality of both baby and wild arugula are good.

Asparagus

The market is steady, we are seeing things firm up in price. Quality is good.

Avocados

The avocado market has recovered from the previous strike; we are seeing good supply on avocados.

Bananas

Demand is good, quality is good. Supplies are steady.

Berries:

Blueberries

Blueberry supplies are good but may become tighter. Chilean blueberry quality is good to very good. Central Mexico blueberry quality is very good.

Blackberries

Blackberry supplies are good. Quality is good to very good. We are seeing this market start to tighten up, prices are remaining steady.

Raspberries

Raspberry supplies are good but tightening up. As always, we see prices go up and supplies get tighter as we move into the holiday season. Quality continues to be good.

Strawberries

The strawberry season from the Watsonville and Salinas growing regions is done for the year. The remaining regions (Santa Maria, Oxnard, and Central Mexico) are harvesting low volumes, with this trend continuing for approximately 4 to 6 weeks. Contributing factors to the low supplies are weather, planted acreage in Oxnard being down from a year ago, and

labor. Quality will continue to be inconsistent depending on location, with some reporting good quality. We are seeing this market improve slightly, but expect to see a lot of ups and downs with this commodity as we move into December.

Bok Choy

Availability is good. Quality is good.

Broccoli

Supplies are light this week. Prices are steady. Good green color and texture.

Brussels Sprouts

The market and supplies are good. Quality has improved.

Cantaloupe

Market is stronger with supplies out of the California Desert and the Arizona region making up a majority of the volume along with some fruit crossing from Mexico. The overall fruit quality is good with mostly a green to straw cast and internal meat color and sugar very good. We are peaking on the larger fruit with few 15's available mostly 9's and 12's but 12's are getting tighter as demand has been good and much heavier on the 9's this week than last.. We Expect to have fruit through the month and then the offshore fruit will be the sole means of supply, we do not expect any gaps through the transition.

Carrots

Great quality and good supply.

Cauliflower

Supplies are light. Quality is good, with good weight and white to creamy color. Demand is picking up.

Celery

The market has dropped as the Thanksgiving pull is over, quality is very good.

Cilantro

Supplies are average. Still seeing yellow and decay in quality.

Sweet Corn

The Georgia rowing season is finishing up and moving to the Belle Glade, Florida area. Florida Corn is priced this week to promote. Availability from Florida is good and looks good moving forward. Midwest sweet corn is done. Southern California corn is available in limited supplies and Colorado corn is finishing up.



MARKET TRENDS

DECEMBER 2, 2016

PERFORMANCE
FOODSERVICE



Produce (continued)

Cucumbers

East: Harvesting continues in FL. FOB prices are up on supers and generally steady on selects. Quality is good.

West: Baja crossings are winding down but Nogales crossing are picking up. FOB prices are generally lower this week. Quality through Nogales is very good.

English Cucumber

Plentiful supplies, with additional product from Northern Mexico now arriving in Nogales.

Eggplant

East: FOB prices are steady. Quality is good.

West: FOB prices are steady. Nogales crossings continue.

Fennel

Supplies for the week will be good.

Garlic

The garlic market continues to be volatile. Demand exceeds supply. The CA harvest finished last month and crops were down 15-30% from where we had hoped they would be. We are uncertain where the supply on garlic from China will be, we are hearing that it will get even tighter, but we are uncertain. Quality remains good and we will keep you posted as we hear what China will be doing.

Ginger

Chinese ginger is in good supply and being offered at a substantial discount, compared to ginger from Brazil.

Grapes

We continue to harvest here in the central valley and will probably have fruit through December which will help us bridge the gap between Chile and USA, so we should have a smooth transition. The overall quality of the fruit is good with excellent sugar content and good color on the reds, the Greens we are having a few issues here and the depending on the lot due to some water berries but for the most part fruit is very good for this time of the year. This is an excellent time to promote California Table Grapes and supplies will be around for a while. We did have some rain last weekend which did cause some issues in the heavier hit regions but since we are nearing the end of our harvest we have a good proportion of the fruit already in the cooler which will help us get through the month of December with supply.

Green Beans

East: Supplies are now good. Demand remains relatively strong. FOB prices are down slightly again this week.

West: Demand is stronger but supplies continue to increase causing FOB prices to fall again this week. Quality is variable.

Green Cabbage

Good supplies. Quality is good.

Red Cabbage

Quality and sizing have been great, with good color. Overall, the market is strong.

Green Onions

The market and supplies are good. Prices are moderate and supplies are good.

Honeydew

Market is steady with good supplies of fruit coming also from the California and Arizona deserts as well as Mexico. The overall fruit quality is very good with a nice green to cream external color and mostly clean, with some ground scars showing up and internal fruit quality is very good as well with good sugar. We expect to have good supplies through the month out of Arizona and California and then we will be dependent upon Mexico and offshore fruit through the winter and spring.

Kale (Green)

Demand is steady and quality is average, we are seeing mildew in this product.

Lemons

We are going strong out of dist 3 (desert) with fruit peaking on 140's and 115's, we are also gassing this fruit which will cause some staining and spotting which will primarily be in the choice grade but internal juice content is good and the fruit is strong. We are going through the dist. 3 fruit at a rapid rate and will probably finish up down there by the end of December which is about 2 months earlier than normal. We are also going in a light way here in dist. 1 (Central Valley) and will continue to increase volume over the next few weeks which will help with the supply situation. We are also still crossing Mexico fruit which is going to be around until the end of the month and then we will be exclusively into California fruit. The overall quality of the California fruit looks good and will only continue to get better as we lessen our gassing hours out of both districts through the month and hopefully by the first of next month we are not gassing fruit at all.

Lettuce:

Green and Red Leaf

Supplies on green leaf are good. Quality is good.



MARKET TRENDS

DECEMBER 2, 2016

PERFORMANCE
FOODSERVICE



Produce (continued)

Iceberg Lettuce

Supplies are good. Quality is average, but should improve. We are seeing some signs of growth crack and seeders.

Romaine

Good supply. Quality is hit or miss, depending on the field.

Romaine Hearts

Plentiful supply. Twisting with average quality.

Limes (Persian)

Quality is good, prices are higher. The 110 & 150ct availability remains tighter than other sizes. Color is very good.

Mangos

Supply and quality are good; prices are rising slightly.

Napa

Supplies are good. Quality has improved.

Onions

The onion market has started to firm as demand has been strong for the holiday, and onions are coming strictly out of storage. The size profiles are larger and there has been a surplus on colossal and super colossal yellows. It is likely that pricing will increase just slightly until demand levels off.

Oranges

We are harvesting new crop navels and fruit has 10.5-11.5 brix with lower acid than usual at this stage of the game, the internal color is a light orange to orange still not totally mature internally with fair juice content. The external color continues to get better but we are still gassing about 96 hours before packing to bring on the color. You will see checkerboard color throughout Fancy and Choice grades and some varieties will be on the lighter color side until we get a good few weeks of cooler temperatures and gas hours will start to decline. By the end of the month, juice and overall maturity will be much better. We are peaking on 113's, 138's followed by 88's but as we progress through the season we will start to see less volume on the smaller fruit as this year's crop is about 15% lighter than last years crop so fruit size later in the season will be on the larger side.

Parsley (Curly, Italian)

Prices are normal and quality is excellent.

Green Bell Pepper

East: Product remains plentiful this week with various fields in full production. Demand is weak. FOB prices remain steady at last week's low prices on all grades and sizes. Overall, quality is good.

West: More supplies continue to cross at Nogales and the desert is still harvesting. FOB prices are lower again this week on all grades and sizes. Quality is good.

Jalapeño Pepper

East: FOB prices are steady this week. Quality is good.

West: FOB price are steady to down slightly in the west this week. Quality is good.

Red & Yellow Pepper

The California market is starting to inch down. Domestic growers are moving to Coachella and Mexican stocks are beginning to increase. Quality is very good: color is bright and flavor is slightly sweet.

Pineapple

Prices are low; supplies are most plentiful in Costa Rica, but Mexican stocks are increasing. Costa Rican quality is best: fruit is firm and juicy. Sugar levels range from 13 to 16 Brix.

Idaho Potatoes

Prices are weak; stocks are ample. All supplies have completed the sweat process and are being shipped from storage.

Radishes

Quality is good. Plentiful supply.

Salad Blends

Raw product supplies from Yuma, Arizona are sub-par due to recent high temperatures. Iceberg is exhibiting dense texture leading to occasional chunks/wads and internal burn. Seeder issues in romaine are leading to occasional core pieces and dark green outer leaves.

Snow and Sugar Snap Peas

Snow and sugar snap peas currently have high demand with good quality.

Spinach (Bunched)

Supply is good, quality is fair. We are still seeing some sun scalding and tip burn, but this has improved. There have been some reports of insects as well. New crop quality looks nice.



Spinach (Baby)

Baby Spinach and Clipped Spinach supplies are good. Quality is fair to good with good prices. There are some reports of insects. New crop looks nice.

MARKET TRENDS

DECEMBER 2, 2016

PERFORMANCE
FOODSERVICE



Produce (continued)

Spring Mix

Lots of product and quality is average.

Green Squash

East: FOB prices are steady on both sizes. Quality continues to be good. Large zucchini market remains steady.

West: FOB prices are higher this week on all grades and sizes. Crossings at Baja and Nogales. Quality is good.

Yellow Squash

East: Yields continue to decline. FOB prices are slightly higher again this week. Quality is variable.

West: Crossings continue at Nogales. FOB prices are higher this week. Quality is good.

Tomatoes

East

Rounds

Like last week, supplies continue to slowly increase but demand has also picked-up as many western re-packers are coming east to meet demand. Therefore, supplies and demand remains in general equilibrium out of our FL this week causing FOB prices to remain largely unchanged with some continued downward pressure. Sizing is improving. In fact, 6x7s and 6x6s might actually begin to get tight later this week. The quality of fruit on the vines over the next several weeks looks excellent and yields should improve.

Romas

Supplies have increased somewhat causing FOB prices to fall slightly on all sizes. Quality continues to be good.

Grapes

Demand has increased slightly. FOB prices are generally steady with some upward pressure. Quality is good.

Cherries

Supplies and quality are improving. FOB prices are falling.

West/Mexico

Rounds

Mature greens remain unavailable out of CA. Re-packers are having to use Mexican vine-ripes and go to FL to meet their needs. Cool and wet weather in the Mexican growing regions have caused crossings to decline. We expect volume out of MX to continue to be weak until late December or early January. However, mature greens out of new fields appear to be ahead of schedule and should be producing in a couple of weeks. Prices for 5x6, 6x6 and 6x7s are generally steady out of FL but the 4x4 and 4x5s out of MX will be bringing higher FOBs due to decreased volume.

Roma

Baja, Nogales and McAllen crossings continue. FOB prices are generally steady for all three sizes. Quality continues to improve but is still variable.

Grapes

Sourcing primarily from Baja and Fresno. Supplies and demand remain light. Many western re-packers are going east to meet demand.

Cherries

Like grape tomatoes, the supply of cherries remain tight and there continues to be a wide range in quality. Many western re-packers continue to go east to meet demand.

Watermelons

Supplies are plentiful, and quality is outstanding. Market is extremely weak. Nogales is being very aggressive with the price in an attempt to keep product moving.

