

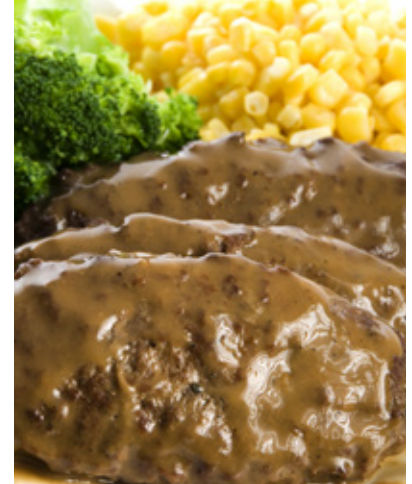


Foodservice products that offer outstanding quality and value.

WEST CREEK®

Philosophy

Performance Foodservice is pleased to offer a selection of ground beef products under its West Creek® Brand. Each product, the 81/19 and the 73/27, is available in packs of 8/10 lb. chubs. The 81/19 product is also available in convenient packs of 4/5 lb. and 8/5 lb. chubs. West Creek® Ground Beef products are perfect for juicy burgers, salisbury steaks, meatloaf and any recipes calling for ground beef. West Creek products are known for their outstanding quality and value throughout the foodservice industry.



Products

Item #	Description	Pack	Size
296565	BEEF GRND FINE 81/19 CHUB	8	10 LB
301695	BEEF GRND FINE 81/19 CHUB	8	5 LB
329695	BEEF GRND FINE 81/19 CHUB	4	5 LB
296566	BEEF GRND FINE 73/27 CHUB	8	10 LB

Recipe



OH SO GOOD MEATLOAF

- 1 1/2 lbs. West Creek® Ground Beef
- 2 Nature's Best Dairy® Eggs
- 2/3 cup Nature's Best Dairy® Milk
- 1 1/2 cups West Creek® Seasoned Croutons
- 1/2 cup Peak Fresh Produce® Yellow Onion, chopped
- 4 oz. West Creek® Mild Feather Shredded Cheddar Cheese
- 1 teaspoon salt
- 1/4 teaspoon of black pepper

Beat eggs with fork. Add milk and croutons and let stand five minutes. Stir in onion and cheese. Add ground beef. Mix well. Shape into a loaf and put in loaf pan sprayed with cooking spray. Bake at 350 degrees for 45 minutes. Serve with tomato sauce of your preference.